

QV - Hatch enlargement



Cut out the template (see the last page) and position it inside the rear axle compartment over the existing hatch opening. Position it in between the walls **a**, **b** & **c**. The **d** side is on the edge of the existing opening. Secure it with masking tape (fig 1).

!!! You do not have to remove the rear axle assembly – we did so to get better pictures.

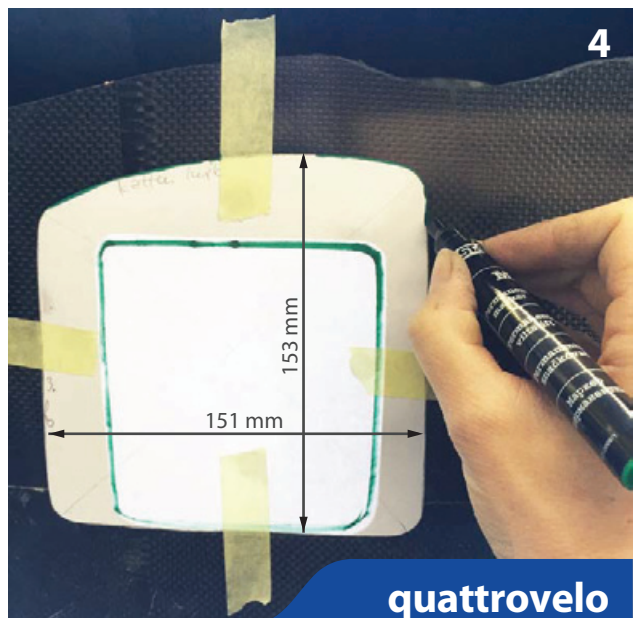
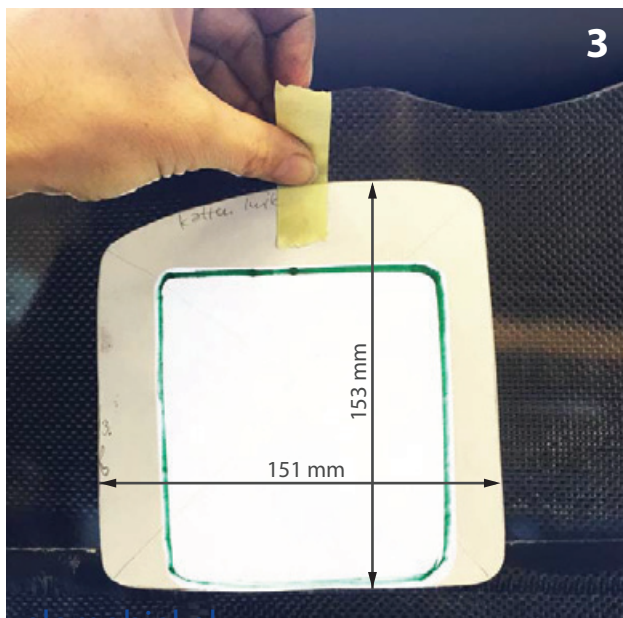
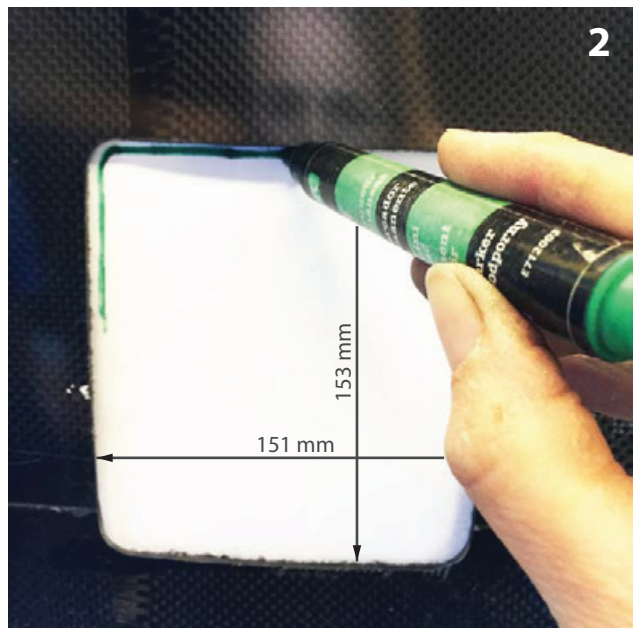
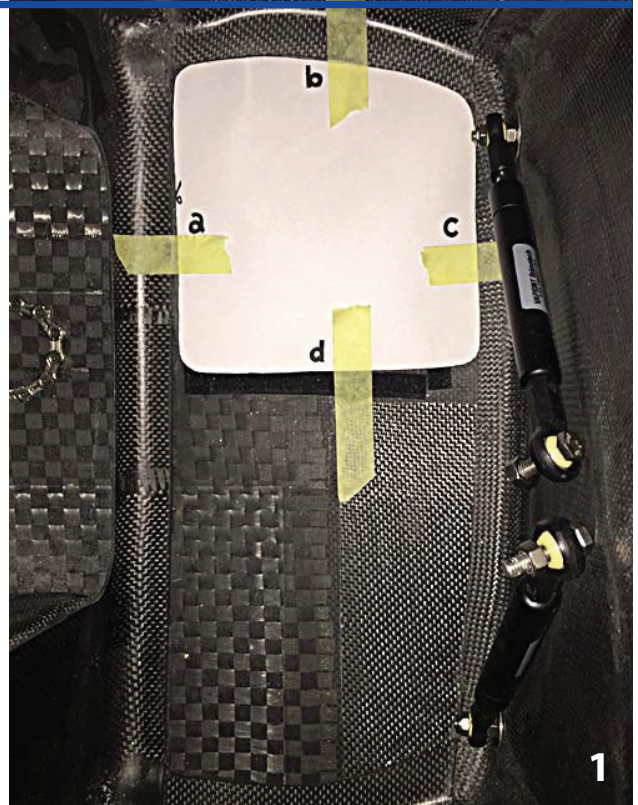
Put your QV on its side.

From the bottom side you outline the existing opening on the paper with a felt pen (fig 2).

Take the template out of the QV and tape it to the outside of the bottom with the line matching the existing opening (fig 3).

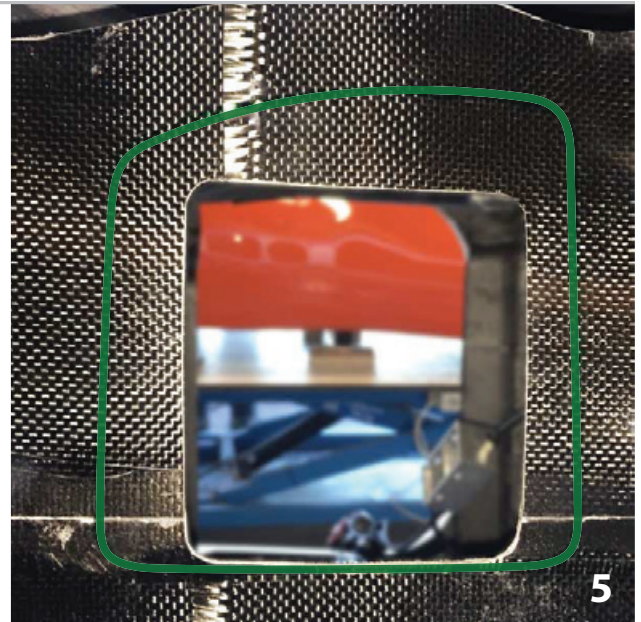
Use a light inside to find the right position.

Tape the template firmly to the bottom and trace the outside with a felt pen, this will be the opening for your new hatch (fig 4).



QV - Hatch enlargement

Fig 5 shows the existing and new opening outline. For cutting you can use a Dremel tool or drill holes on each corner and use a hacksaw.

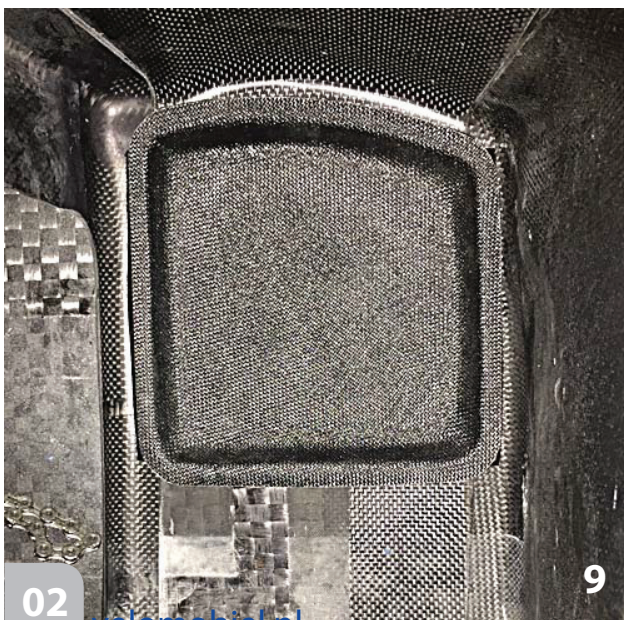


To check if the hatch fits properly you can use a piece of gaffer tape as a handle (fig 6).



Stick the soft side of the Velcro to the dust and grease free sides of the new hatch and the other side to the body (fig 7).

Use a hot air gun or hairdryer to heat up the glue (fig 8).



New hatch in position (fig 9).

